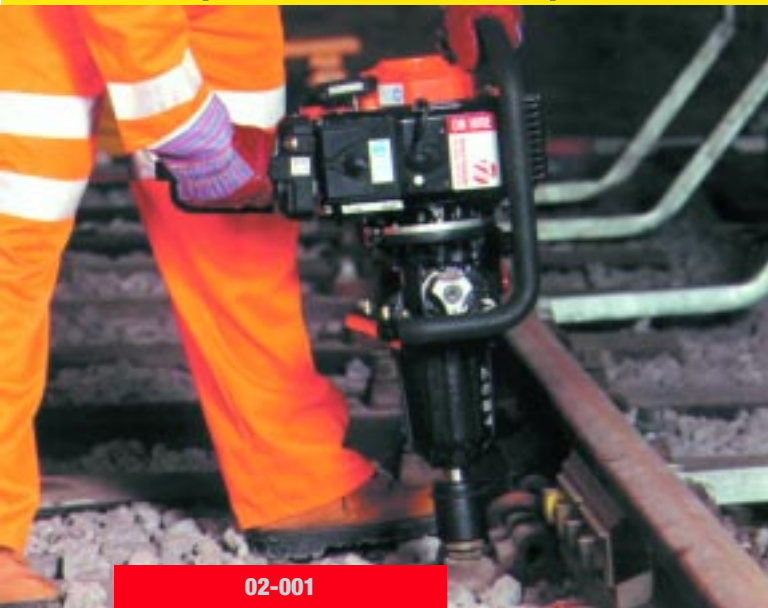


impact & torque wrenches



02-001

Specification

Power Source: 2-stroke petrol
 Engine Capacity: 56cc
 Length: 590mm
 Height: 270mm
 Width: 460mm
 Torque: 350-600ft/lb (adjustable)
 1" standard square drive
 Total Weight: 20.0kg



02-002

Specification

Socket Rotation Speeds: 70/195rpm; 70/255rpm
 Dimensions: 2000x620x880mm
 Weight: Trolley: 35kg
 Without Trolley: 108-141kg (dependent on type of engine)
 Torque Controller: 28kg
 Total Weight: 176kg

Maxim Master 35 Impact Wrench

A lightweight machine for tightening and loosening bolts or nuts, driving in and removing chair screws and when using an adaptor chuck, for augering. Uses standard sockets and auger bits.

Powered by a 56cc air cooled engine, the machine is equipped with full anti-vibration handles, electronic ignition, centrifugal clutch and a diaphragm carburettor.

There is also a foot rest for added stability when pull starting and an anti-scoff plate fitted to the fuel tank base.



02-001

Geismar TB2 Impact Wrench

The Geismar TB2 Rail Mounted Impact Wrench is a machine specifically designed for heavy duty coachscrew and fishbolt fastening. Quick switching from coachscrew to fishbolts position and vice versa can be achieved in as little as 15 seconds.

The TB2 also features two socket rotation speeds, an adjustable torque limiting device with graduated dial for direct reading of the tightening torque.

The TB2 is powered by a pull start petrol or diesel engine fitted with a five litre fuel tank.

Code	Description	Weight	Vibration
02-001	Impact Wrench (2-stroke)	20.0kg	13.1M/s ² ⊖
02-002	TB2 Impact Wrench (rail mounted)	176.0kg	6.0M/s ² ⊖
02-003	Impact Wrench (hydraulic)	12.0kg	33.4M/s ²
02-004	Torque Wrench (hand held 650ft/lb)	12.0kg	⊖
02-005	Impact Wrench (electric 1/2" drive)	11.0kg	
02-009	Torque Wrench (3/4" drive)	12.0kg	⊖

CONSUMABLES

Code	Description	Weight
21-448	Impact Wrench Pin	0.1kg
21-449	Impact Wrench Ring	0.1kg
Full range of sockets available on request		