

rail **drilling** equipment

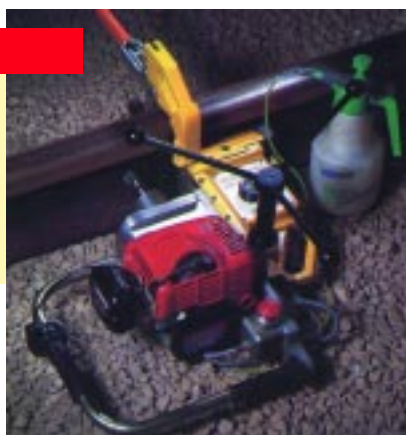
Rotamag TM32

The universal track drilling system quickly clamps on to any standard rail section and accurately drills holes for bonds, fishplates and stretcher bars. The high frequency version of this machine has been approved for use on Network Rail and London Underground networks. The rail indexing plate and vertical adjustment using a positive spring locator, ensures that every hole is correctly placed at all times, regardless of diameter and hole pitch specification.

03-004

Specification

Length: 750mm
Width: 500mm
Height: 255mm
Power: 2-stroke petrol
Total Weight: 45.5kg



Rotamag PM38

Powered by a 40cc petrol motor through an automatic clutch and gearbox, the fully independent PM38 makes on-line track drilling, a one-man operation.

Compact, lightweight and portable with positive location of accurate holes up to 38mm diameter on all types of rail section.

Operation could not be simpler. The lightweight unit can be clamped over the rail within 5 seconds. A positive location is achieved through the rail indexing plate and vertical adjustment facility. This ensures accurate hole positioning up to the maximum diameter regardless of hole pitch. Specification to suit any type of fishplate.

Code	Description	Weight
03-003	Rotamag TM32	38.0kg
03-004	Rotamag PM38	45.5kg

CONSUMABLES

Code	Description	Weight
21-001	2-Stroke Oil	1.0kg per litre
21-003	Petrol	0.9kg per litre



03-003

Specification

Dimensions: 814 x 305 x 255mm
Power: 110v ac
High Freq. Version: 200/300Hz
Total Weight: 38kg

CONSUMABLES

Code	Description	Weight
21-040	Auger Bit 9mm Hex x 230mm	0.15kg
21-401	10mm (3/16in) Soft Wood Drill Bit	0.15kg
21-402	13mm (1/2in) Soft Wood Drill Bit	0.15kg
21-403	16mm (5/8in) Soft Wood Drill Bit	0.15kg
21-404	18mm (3/4in) Soft Wood Drill Bit	0.15kg
21-405	19mm (3/4in) Soft Wood Drill Bit	0.15kg
21-406	22mm (7/8in) Soft Wood Drill Bit	0.15kg
21-407	10mm (3/16in) Hard Wood Drill Bit	0.15kg
21-408	13mm (1/2in) Hard Wood Drill Bit	0.15kg
21-409	16mm (5/8in) Hard Wood Drill Bit	0.15kg
21-411	18mm (3/4in) Hard Wood Drill Bit	0.15kg
21-412	19mm (3/4in) Hard Wood Drill Bit	0.15kg
21-413	22mm (7/8in) Hard Wood Drill Bit	0.15kg
21-414	7mm (9/32in) Bond Hole Drill Bit	0.15kg
21-415	12mm (1/2in) PT8 Drill Bit	0.2kg
21-416	14mm (11/32in) PT8 Drill Bit	0.2kg
21-417	16mm (5/8in) PT8 Drill Bit	0.2kg
21-418	17.5mm (11/16in) PT8 Drill Bit	0.3kg
21-419	18mm (3/4in) PT8 Drill Bit	0.3kg
21-421	21mm (13/16in) Rail Drill Cutter (RMR 25mm)	
21-422	22mm (7/8in) Rail Drill Cutter (RMR 25mm)	
21-428	28mm (1 1/8in) Rail Drill Cutter (RMR 25mm)	
21-429	29mm (1 1/8in) Rail Drill Cutter (RMR 25mm)	
21-430	30mm (1 1/8in) Rail Drill Cutter (RMR 25mm)	
21-431	31mm (1 1/8in) Rail Drill Cutter (RMR 25mm)	
21-432	32mm (1 1/4in) Rail Drill Cutter (RMR 25mm)	
21-434	Pilot Pin	
21-435	Manganese Cutters (available on request)	