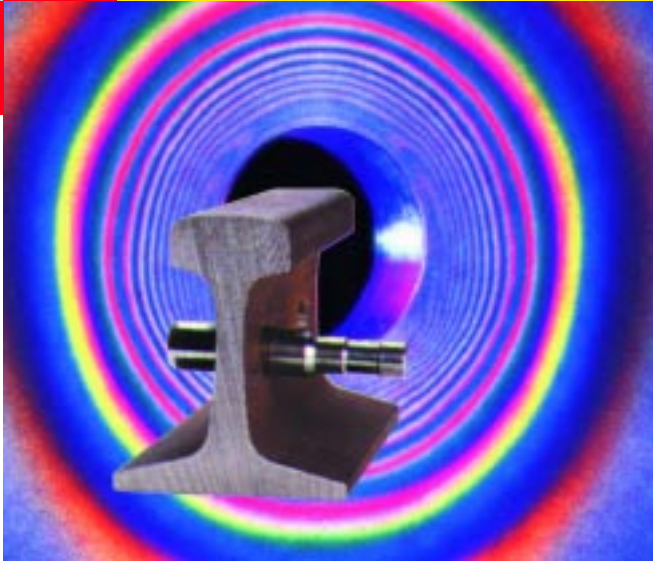


cold expansion & huck bolt



18-001

Code	Description	Weight
03-005	Plug Cutter Drill	20.0kg
18-001	Cold Expansion Puller Gun (FTI)	10.0kg
18-004	Cold Expansion Hydraulic Power Pack (FTI)	30.0kg
18-007	Cold Expansion Electric Power Pack (FTI)	30.0kg
Code	Description	Weight
14-001	Huck Bolt 1in Gun	23.0kg
14-002	Huck Bolt 1½in Gun	23.0kg
14-003	Huck Bolt Powerpack ¹ (c/w hose set)	48.0kg
14-004	Huck Bolt Cutter	25.0kg

¹ Electric Powerpacks require a minimum of 5kVA.
Hydraulic installation tools are supplied with one hose assembly.

COLD EXPANSION CONSUMABLES

Code	Description	Weight
22-014	Plug Cutter 28-30	0.25kg
22-015	Plug Cutter 29-31	0.25kg
22-016	Plug Cutter 30-32	0.25kg
22-017	Plug Cutter 31-33	0.25kg
18-026	31.0mm Sleeve	0.5kg per 10
18-027	32.0mm Sleeve	0.5kg per 10
18-028	33.0mm Sleeve	0.5kg per 10
18-029	30.0mm Sleeve	0.5kg per 10

About Cold Expansion

Railway track is continually subjected to high cyclic tensile loads generated by the passage of rolling stock over joints. Flexing and displacement of rails at bolted joints, combine to induce high tensile loads at the bolt hole which often generates fatigue cracks. If left undetected, these fatigue induced cracks can lead to fractures which in extreme cases could cause train derailment. The cracking of rail-end bolt holes has been a major concern for years and a major cause of premature rail replacement, imposition of speed restrictions and is a significant factor in rail inspection and maintenance costs. Increased rolling stock loads and heavier rail traffic has made it even more essential to eliminate fatigue cracks and prevent potential costly derailments. Fatigue Technology's (FTI) RailTec System substantially increases the life of bolted rail by shielding bolt holes from the stresses that cause cracks and failure. FTI's system has successfully extended the life of bolt holes in metal structures for over 25 years.

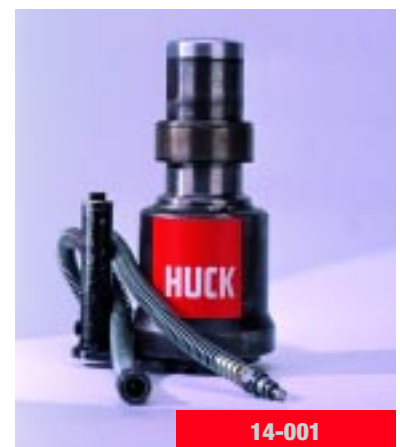
- Improves the fatigue life of a hole by at least 300%
- Arrests the growth of small cracks
- Cost-effective alternative to replacement track
- Reduces maintenance and inspection costs
- Increases the overall structural integrity and safety of the line

We are able to offer a specially adapted rail drill which has vertical and horizontal axes adjustments and comes complete with a range of tools for opening out bolt holes. The drill can be used for the following applications:

- Drilling 30mm holes in new track
- Expanding undersize holes to 30mm
- Expanding bolt holes in existing track prior to cold expansion with three size options: 31mm; 32mm; 33mm.

The drill and tooling (shown opposite) eliminates the use of a Benkler rail drill, tapered bridge reamers and trolley mounted swivel jib.

We also offer Training on how to use Cold Expansion Equipment.



14-001

Torrent Trackside is the authorised agency for sales in the UK & Eire for all FTI Railtec System cold expansion products